



Molina Marketplace 2022 Open Enrollment

Gene Wedgeworth
Marketplace Sales Manager, NM

Your NM Molina Broker Rep



Gene Wedgeworth, Molina Marketplace Sales Manager

Cell: 972-210-9437

Gene.Wedgeworth@MolinaHealthcare.com

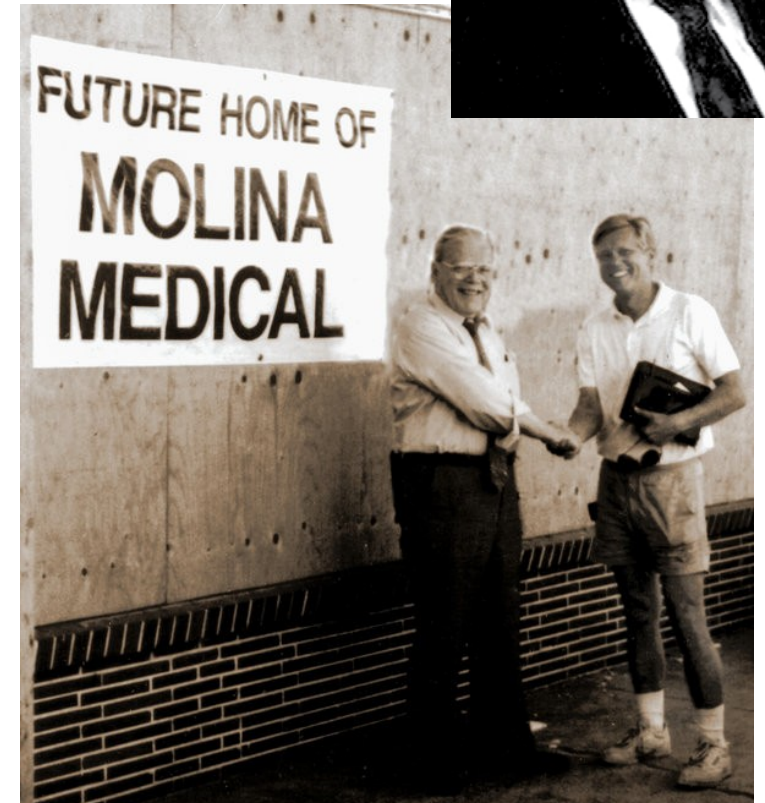
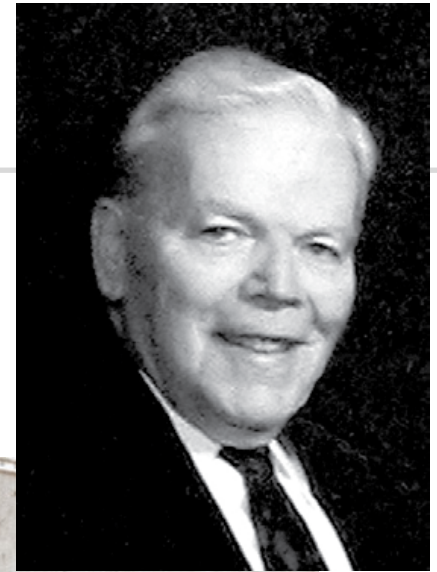
The Molina Story

While working as an emergency room physician, Dr. C. David Molina saw a need to change how the health care system cared for people on a budget. Dr. Molina believed that every patient should be cared for like family.

In 1980, he opened a community clinic where caring for people was more important than their ability to pay.

Today, the legacy of Dr. Molina lives on through Molina Healthcare, a company that cares for more than 3.5 million members in 15 states. Serving people with Medicare, Medicaid, and Marketplace, Molina Healthcare remains true to Dr. Molina's convictions:

treating each person like a member of the family.



About Molina

Our Mission

Our mission is to provide quality health care to people receiving government assistance.

Our Vision

We will distinguish ourselves as the low-cost, most effective and reliable health plan delivering government-sponsored care

Our Values

- Integrity Always
- Absolute Accountability
- Supportive Teamwork
- Honest and Open Communication
- Member and Community Focused

Our history

- Founded in 1980

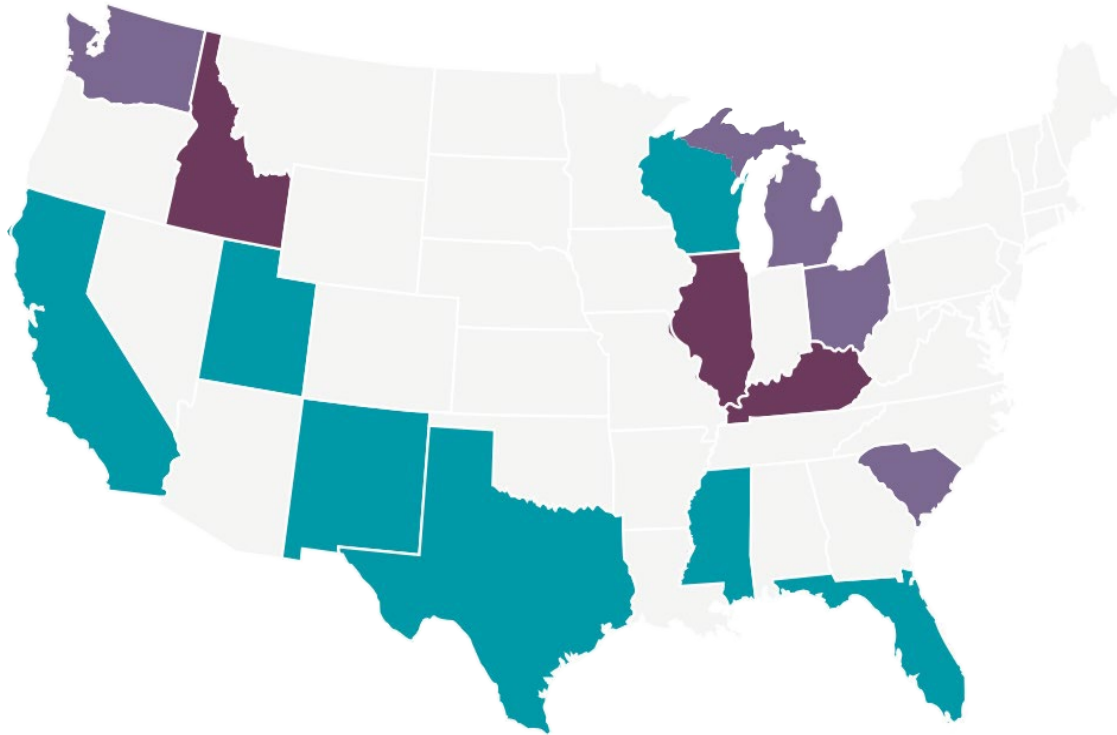
Total number of members nationwide

- 4,381,052 (as of May 18, 2021)

Fortune 500 ranking

- Ranked 155 in Fortune 500 with revenues over \$19B

National Footprint 2022



- 2021 Existing States
- 2022 Expansion States
- Existing States With Expansion Counties

State	2021 Existing Counties	2022 Expansion Counties	Total Counties
CA	6	0	6
FL	12	0	12
ID	N/A	7	7
IL	N/A	4	4
KY	N/A	3	3
MI	8	7	15
MS	82	Statewide	82
NM	33	Statewide	33
OH	40	24	64
SC	33	10	43
TX	14	0	14
UT	13	0	13
WA	14	4	18
WI	29	0	29
Total	284	59	343

2022 Molina Footprint

New Mexico

Service Area

Existing Footprint



Health Plan Highlights

Disclaimer

“This policy has exclusions, limitations and terms under which the policy may be continued in force or discontinued. For costs and complete details of the coverage, call your insurance agent or Molina Healthcare.”

2022 Plan Update

Bronze Plans:

2021 Plans	2022 Plans	
Core Care Bronze 1	Confident Care Gold 1	(mapped renewal)
Core Care Bronze 1 + Vision	Confident Care Gold 1 + Vision	(mapped renewal)
Core Care Bronze 2	Confident Care Gold 1	(mapped renewal)
Core Care Bronze 4	Confident Care Gold 1	(mapped renewal)
Core Care Bronze 5	Confident Care Gold 1	(mapped renewal)

Bronze Renewal Mapping –

- *NM OSI does not follow CMS plan mapping.*
- *All discontinued Bronze plans will map to a Gold plan*

Silver Plans:

2021 Plans	2022 Plans	
Constant Care Silver 1	Constant Care Silver 1	(renewal)
Constant Care Silver 1 + Vision	Constant Care Silver 1 + Vision	(renewal)
Constant Care Silver 2	Constant Care Silver 2	(new)
Constant Care Silver 4	Constant Care Silver 4	(new)
N/A	Constant Care Silver 7	(new)

Gold Plans:

2021 Plans	2022 Plans	
Confident Care Gold 1	Confident Care Gold 1	(renewal)
Confident Care Gold 1 + Vision	Confident Care Gold 1 + Vision	(renewal)
Confident Care Gold 2	Confident Care Gold 1	(mapped renewal)

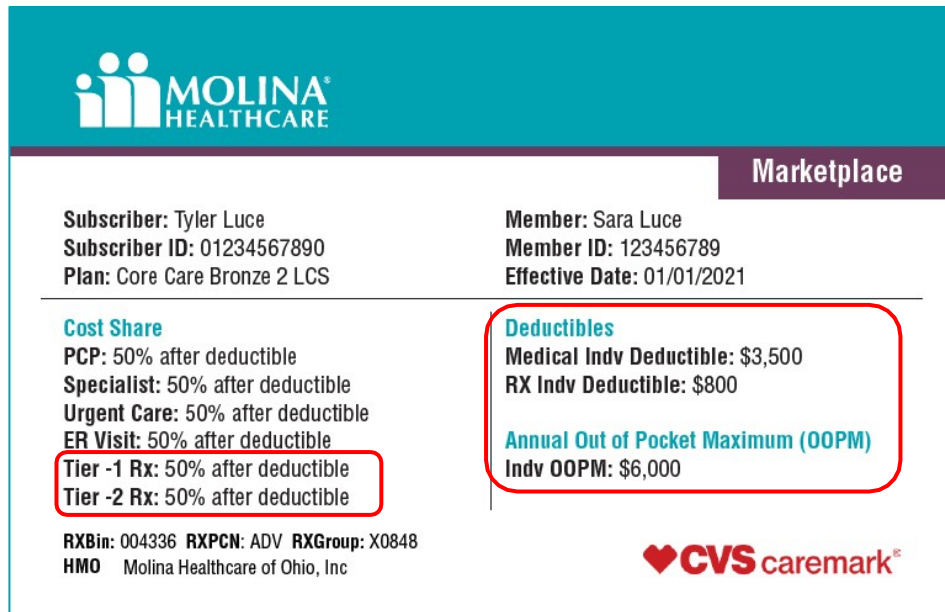
New Mexico

	Constant Care Silver 1		Constant Care Silver 7		Confident Care Gold 1
Plan Name	Silver 100	Silver 250	Silver 100	Silver 250	
Deductible	\$0	\$0	\$0	\$0	\$2,200 Combined Med/Rx
Max OOP	\$1,200	\$8,500	\$1,200	\$8,550	\$8,550
PCP Copay	\$0	\$30	\$0	\$30	\$10
Specialist Copay	\$10	\$60	\$10	\$90	\$50
Urgent Care Copay	\$0	\$30	\$0	\$30	\$10
Teladoc Virtual Care	\$0	\$0	\$0	\$0	\$0
Inpatient Copay	\$600/day (max 2 copays)	\$1,200/day (max 2 copays)	\$200/day (max 2 copays)	\$600/day (max 2 copays)	20% after deductible
Prescription Drug					
Deductible	\$0	\$800	\$0	\$1,350	Combined with Medical
Rx Tier 1	\$0	\$29	\$0	\$30	\$10
Rx Tier 2	\$10	\$60	\$10	\$100	\$50
Rx Tier 3	10%	40% after deductible	10%	40% after deductible	30% after deductible
Rx Tier 4	10%	40% after deductible	10%	40% after deductible	30% after deductible
Vision					
Adult Vision Option	Yes	Yes	No	No	Yes

New Capabilities & Requirements

New ID Card Requirements

- **Regulatory Requirement** - Added Deductibles and Out of Pocket Maximums
- **Simplification** – Expanded display requirements and cleaner layout for contacts



MOLINA HEALTHCARE

Marketplace

Subscriber: Tyler Luce
Subscriber ID: 01234567890
Plan: Core Care Bronze 2 LCS

Member: Sara Luce
Member ID: 123456789
Effective Date: 01/01/2021

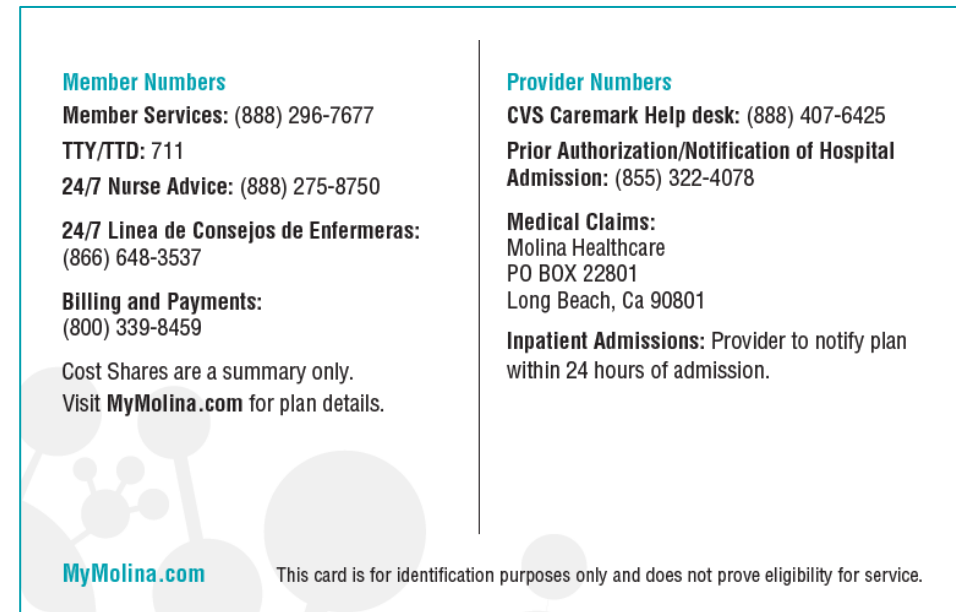
Cost Share
PCP: 50% after deductible
Specialist: 50% after deductible
Urgent Care: 50% after deductible
ER Visit: 50% after deductible
Tier -1 Rx: 50% after deductible
Tier -2 Rx: 50% after deductible

Deductibles
Medical Indv Deductible: \$3,500
RX Indv Deductible: \$800

Annual Out of Pocket Maximum (OOPM)
Indv OOPM: \$6,000

RXBin: 004336 RXPCN: ADV RXGroup: X0848
HMO Molina Healthcare of Ohio, Inc

CVS caremark®



Member Numbers
Member Services: (888) 296-7677
TTY/TTD: 711
24/7 Nurse Advice: (888) 275-8750

24/7 Linea de Consejos de Enfermeras:
(866) 648-3537

Billing and Payments:
(800) 339-8459

Cost Shares are a summary only.
Visit MyMolina.com for plan details.

Provider Numbers
CVS Caremark Help desk: (888) 407-6425
Prior Authorization/Notification of Hospital Admission: (855) 322-4078

Medical Claims:
Molina Healthcare
PO BOX 22801
Long Beach, Ca 90801

Inpatient Admissions: Provider to notify plan within 24 hours of admission.

MyMolina.com This card is for identification purposes only and does not prove eligibility for service.

Sample ID Card